

# CYGNUS ROV UTM

## ULTRASONIC THICKNESS GAUGE



Specifically designed for underwater remotely operated vehicles, Cygnum offers a dedicated ROV mountable thickness gauge (depth rated to 3,000m) with live A-scan and piezo-composite probe. This gauge is versatile and designed to measure metal thickness in the harshest subsea operating conditions - without the need to remove coatings.

IDEAL FOR  
USE IN



CIVIL  
ENGINEERING

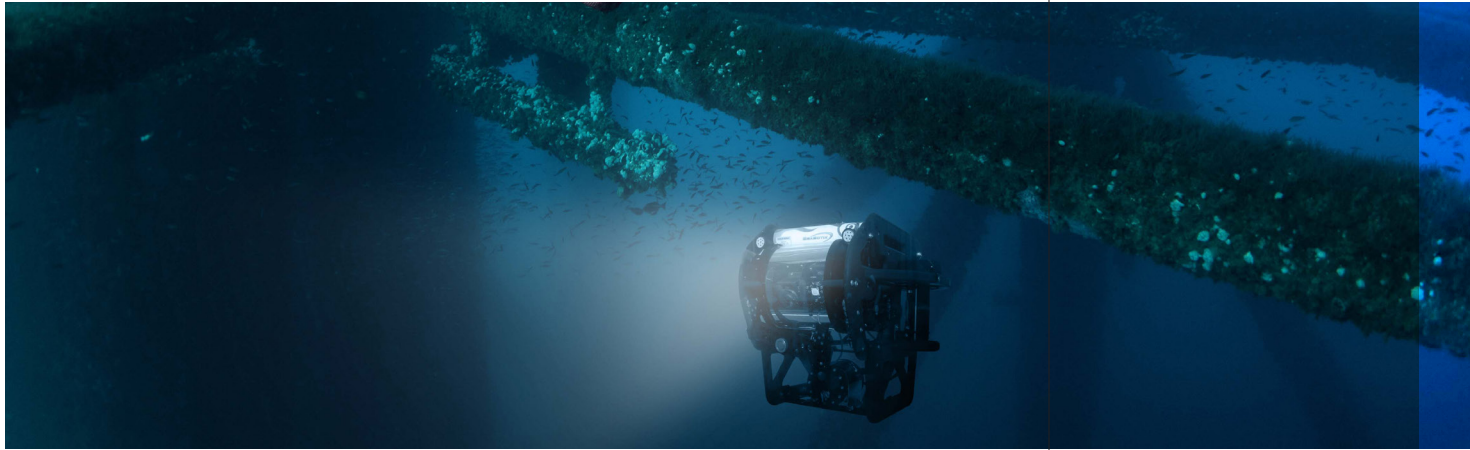


MARINE  
STRUCTURES



OFFSHORE  
PLATFORMS

...Class surveys on offshore installations or units, subsea inspection, repair and maintenance (IRM) of infrastructure, underwater equipment



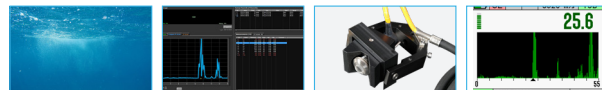
### BENEFITS OF MULTIPLE-ECHO

- Measures remaining metal thickness on corroded and coated structures
- All measurements are error checked using 3 return echoes to give repeatable, reliable results
- Accepted by all major classification societies
- Greatly reduces inspection time and costs

## CYGNUS ROV UTM KEY FEATURES



- A-scan to assist with measurement verification visually
- Multiple-Echo and Echo-Echo modes for accurate measurements through coatings (up to 1mm) as specified by Classification Societies
- Single-Echo mode for heavily corroded metals with no coating
- Use the Auto SE/EE/ME measuring mode for best results or set manually
- Supplied with CygLink software to display and process measurements on a computer at the surface
- High-performance SD2C probe fitted with a Hard Rexolite Delay line
- Easy calibration and measurement settings via CygLink software at the surface
- P50 Probe Handler cleverly-designed to self-align with pipes from 50mm diameters to flat surfaces
- Manual or automatic gain control



**DEPTH RATED TO**  
3KM/9,843FT

**CYGLINK SOFTWARE**

**CLEVER PROBE HANDLER FOR EASY ALIGNMENT**

**LIVE A SCAN FOR FURTHER VERIFICATION**

## OPTIONS AND ACCESSORIES

### Probe Handling Solutions

The 'P50' Probe Handler is designed to align the ultrasonic probe on to straight pipes, from 50mm in diameter up to flat surfaces.

The spring-loaded probe and v-shaped block allow the probe to be positioned correctly on a straight pipe and move to accommodate different pipe diameters.

A gimbal allows the probe to move to align on to the straight pipe surface when used with a ROV manipulator arm.

The probe handler can be fitted with a choice of manipulator handles; T Bar or Fishtail.



T-Bar Handle

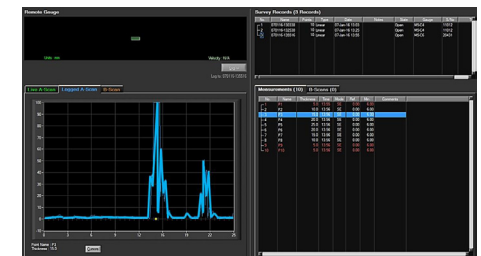


Fishtail Handle



### Cymlink Computer Software

CygLink is a Windows® based application for topside computer use to display continuous A-Scan output and measurement data. CygLink has the facility to log both data formats into a Survey file for report presentation, which can be emailed, exported as a PDF, or printed.



GO TO  
PRODUCT  
PAGE

Visit [www.cygnus-instruments.com](http://www.cygnus-instruments.com) to explore our full product range

Call our team today on +44 (0) 1305 265 533 for expert product advice

## CYGNUS ROV UTM SPECIFICATION

Feature	Description
<b>Materials</b>	Sound velocities between 2000 m/s and 9000 m/s (0.0780 in/us to 0.3543 in/us)
<b>Measuring Modes</b>	Multiple-Echo using 3 echoes to ignore coatings up to 1mm(0.039") thick. Echo-Echo using 2 echoes to ignore coatings up to 1mm(0.039") thick. Single-Echo using 1 echo
<b>Accuracy</b>	±0.1 mm (±0.004") or 0.1% of thickness measurement, whichever is greatest, when calibrated in accordance with Cygnus Instruments calibration procedure
<b>Measurement Range in Steel</b>	Multiple Echo: 4 - 20mm (0.157" to 0.78") Echo Echo: 4 - 30mm (0.157" to 1.18") Single Echo: 4 - 50mm (0.157" to 1.96")
<b>Measurement Resolution</b>	0.1 mm (0.005")
<b>Probe Zero</b>	Automatic and manual selectable
<b>Power</b>	12 - 24 V supply input @ 60mA (average) @ 200mA (maximum)
<b>Size</b>	105mm x 110mm x 35mm (4.1 in x 4.3 in x 1.4 in) (W x H x D)
<b>Weight in Air</b>	Gauge body 3.7kg max (8.2 lb.)
<b>Operating Temp.</b>	-10°C to 50°C (14°F to 122°F)
<b>Environmental Rating</b>	IP68 rated to 3000m (9,843 ft)
<b>Communication</b>	RS-232
<b>Computer Software</b>	CygLink allows remote data logging and viewing of A-scan graphs Survey and report generation to PDF file Graphic analysis of data Designed for Windows 10 and above
<b>Environmental</b>	CE, UKCA, RoHS
<b>Warranty</b>	3 years on gauge and 6 months on probe



Cygnus Instruments Ltd.  
Cygnus House  
30 Prince of Wales Road  
Dorchester  
Dorset DT1 1PW  
United Kingdom



ISS1 11/21

All information provided is subject to change without prior notice.

### Cygnus Headquarters

**Call** +44 (0) 1305 265 533  
**Email** sales@cygnus-instruments.com  
**Visit** cygnus-instruments.com

### Cygnus UAE

**Call** +971 50 3459305  
**Email** ribu@cygnus-instruments.com  
**Visit** cygnus-instruments.com

### Cygnus USA

**Call** +1 (410) 267 9771  
**Email** sales@cygnusinstruments.com  
**Visit** cygnus-instruments.com/us/

### Cygnus Singapore

**Call** +65 6252 5909  
**Email** sales@cygnus-instruments.sg  
**Visit** cygnus-instruments.com/sg/